
Oviedo Firefighters' Retirement System

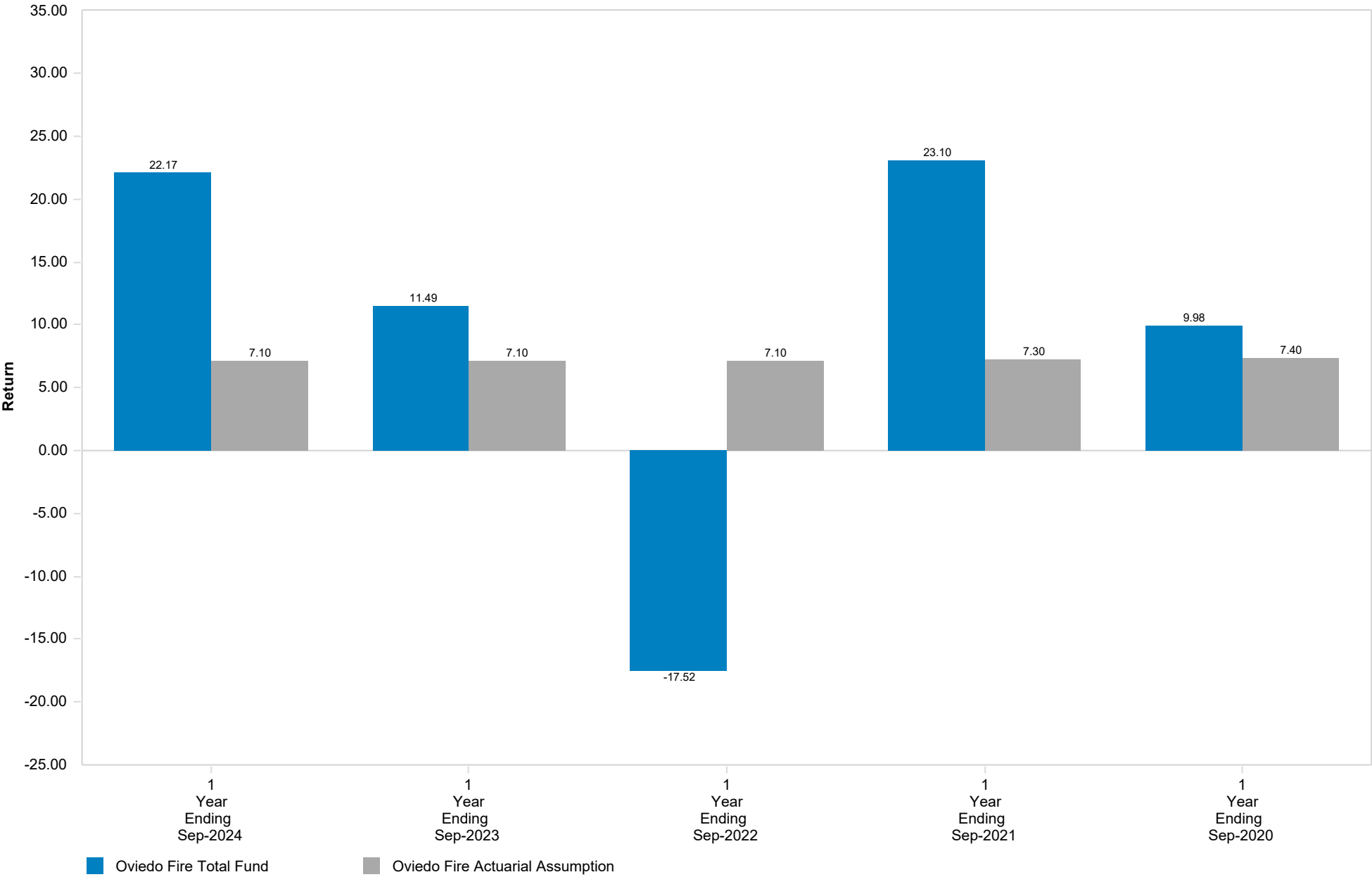
Investment Performance Review
Period Ending September 30, 2024
60T Report

MARINER

Oviedo Firefighters' Retirement System
Asset Allocation
As of September 30, 2024

Asset Allocation Attributes										
	Sep-2024		Sep-2023		Sep-2022		Sep-2021		Sep-2020	
	(\$)	%	(\$)	%	(\$)	%	(\$)	%	(\$)	%
Total Equity	16,438,116	68.45	12,663,785	65.75	10,957,259	64.41	13,795,073	67.33	11,389,800	66.86
Total Domestic Equity	12,534,628	52.20	8,988,278	46.66	8,668,777	50.95	10,386,965	50.70	8,658,165	50.83
Total International Equity	3,903,488	16.25	3,675,507	19.08	2,288,482	13.45	3,408,108	16.63	2,731,635	16.04
Total Fixed Income	4,610,541	19.20	4,052,506	21.04	3,527,116	20.73	4,650,344	22.70	4,111,942	24.14
Total Broad Market Fixed Income	3,186,603	13.27	2,899,591	15.05	2,035,906	11.97	3,929,422	19.18	3,424,155	20.10
Total Non-Core Fixed Income	1,423,938	5.93	1,152,915	5.99	1,491,210	8.77	720,922	3.52	687,788	4.04
Total Real Estate	1,530,362	6.37	1,682,123	8.73	1,944,511	11.43	1,562,963	7.63	1,392,137	8.17
Total Cash Composite	1,435,296	5.98	863,057	4.48	584,094	3.43	479,905	2.34	140,860	0.83
Total Fund	24,014,315	100.00	19,261,472	100.00	17,012,980	100.00	20,488,285	100.00	17,034,739	100.00

Comparative Performance Net of Fees



Active Return	- Arithmetic difference between the manager's performance and the designated benchmark return over a specified time period.
Alpha	- A measure of the difference between a portfolio's actual performance and its expected return based on its level of risk as determined by beta. It determines the portfolio's non-systemic return, or its historical performance not explained by movements of the market.
Beta	- A measure of the sensitivity of a portfolio to the movements in the market. It is a measure of the portfolio's systematic risk.
Consistency	- The percentage of quarters that a product achieved a rate of return higher than that of its benchmark. Higher consistency indicates the manager has contributed more to the product's performance.
Distributed to Paid In (DPI)	- The ratio of money distributed to Limited Partners by the fund, relative to contributions. It is calculated by dividing cumulative distributions by paid in capital. This multiple shows the investor how much money they got back. It is a good measure for evaluating a fund later in its life because there are more distributions to measure against.
Down Market Capture	- The ratio of average portfolio performance over the designated benchmark during periods of negative returns. A lower value indicates better product performance
Downside Risk	- A measure similar to standard deviation that utilizes only the negative movements of the return series. It is calculated by taking the standard deviation of the negative quarterly set of returns. A higher factor is indicative of a riskier product.
Excess Return	- Arithmetic difference between the manager's performance and the risk-free return over a specified time period.
Excess Risk	- A measure of the standard deviation of a portfolio's performance relative to the risk free return.
Information Ratio	- This calculates the value-added contribution of the manager and is derived by dividing the active rate of return of the portfolio by the tracking error. The higher the Information Ratio, the more the manager has added value to the portfolio.
Public Market Equivalent (PME)	- Designs a set of analyses used in the Private Equity Industry to evaluate the performance of a Private Equity Fund against a public benchmark or index.
R-Squared	- The percentage of a portfolio's performance that can be explained by the behavior of the appropriate benchmark. A high R-Squared means the portfolio's performance has historically moved in the same direction as the appropriate benchmark.
Return	- Compounded rate of return for the period.
Sharpe Ratio	- Represents the excess rate of return over the risk free return divided by the standard deviation of the excess return. The result is an absolute rate of return per unit of risk. A higher value demonstrates better historical risk-adjusted performance.
Standard Deviation	- A statistical measure of the range of a portfolio's performance. It represents the variability of returns around the average return over a specified time period.
Total Value to Paid In (TVPI)	- The ratio of the current value of remaining investments within a fund, plus the total value of all distributions to date, relative to the total amount of capital paid into the fund to date. It is a good measure of performance before the end of a fund's life
Tracking Error	- This is a measure of the standard deviation of a portfolio's returns in relation to the performance of its designated market benchmark.
Treynor Ratio	- Similar to Sharpe ratio but utilizes beta rather than excess risk as determined by standard deviation. It is calculated by taking the excess rate of return above the risk free rate divided by beta to derive the absolute rate of return per unit of risk. A higher value indicates a product has achieved better historical risk-adjusted performance.
Up Market Capture	- The ratio of average portfolio performance over the designated benchmark during periods of positive returns. A higher value indicates better product performance.

Mariner Institutional compiled this report for the sole use of the client for which it was prepared. Mariner Institutional is responsible for evaluating the performance results of the Total Fund along with the investment advisors by comparing their performance with indices and other related peer universe data that is deemed appropriate. Mariner Institutional uses the results from this evaluation to make observations and recommendations to the client. Mariner Institutional uses time-weighted calculations which are founded on standards recommended by the CFA Institute. The calculations and values shown are based on information that is received from custodians. Mariner Institutional analyzes transactions as indicated on the custodian statements and reviews the custodial market values of the portfolio. As a result, this provides Mariner Institutional with a reasonable basis that the investment information presented is free from material misstatement. This methodology of evaluating and measuring performance provides Mariner Institutional with a practical foundation for our observations and recommendations. Nothing came to our attention that would cause Mariner Institutional to believe that the information presented is significantly misstated.

This performance report is based on data obtained by the client's custodian(s), investment fund administrator, or other sources believed to be reliable. While these sources are believed to be reliable, the data providers are responsible for the accuracy and completeness of their statements. Clients are encouraged to compare the records of their custodian(s) to ensure this report fairly and accurately reflects their various asset positions.

The strategies listed may not be suitable for all investors. We believe the information provided here is reliable, but do not warrant or guarantee its accuracy or completeness. Past performance is not an indication of future performance. Any information contained in this report is for informational purposes only and should not be construed to be an offer to buy or sell any securities or any investment advisory services.

Please note that Neuberger Berman (NB) owns a non-controlling minority stake in Mariner. Certain NB strategies may hold an allocation to the investment in Mariner. For specific impacted strategies, please reach out to your investment consultant or Mariner Institutional at institutionalcompliance@mariner.com

Additional information included in this document may contain data provided by index databases, public economic sources, and the managers themselves.

This document may contain data provided by Bloomberg.

This document may contain data provided by Standard and Poor's. Nothing contained within any document, advertisement or presentation from S&P Indices constitutes an offer of services in jurisdictions where S&P Indices does not have the necessary licenses. All information provided by S&P Indices is impersonal and is not tailored to the needs of any person, entity or group of persons. Any returns or performance provided within any document is provided for illustrative purposes only and does not demonstrate actual performance. Past performance is not a guarantee of future investment results.

This document may contain data provided by MSCI, Inc. Copyright MSCI, 2017. Unpublished. All Rights Reserved. This information may only be used for your internal use, may not be reproduced or disseminated in any form and may not be used to create any financial instruments or products or any indices. This information is provided on an "as is" basis and the user of this information assumes the entire risk of any use it may make or permit to be made of this information. Neither MSCI, any of its affiliates or any other person involved in or related to compiling, computing or creating this information makes any express or implied warranties or representations with respect to such information or the results to be obtained by the use thereof, and MSCI, its affiliates and each such other person hereby expressly disclaim all warranties (including, without limitation, all warranties of originality, accuracy, completeness, timeliness, non-infringement, merchantability and fitness for a particular purpose) with respect to this information. Without limiting any of the foregoing, in no event shall MSCI, any of its affiliates or any other person involved in or related to compiling, computing or creating this information have any liability for any direct, indirect, special, incidental, punitive, consequential or any other damages (including, without limitation, lost profits) even if notified of, or if it might otherwise have anticipated, the possibility of such damages.

This document may contain data provided by Russell Investment Group. Russell Investment Group is the source owner of the data contained or reflected in this material and all trademarks and copyrights related thereto. The material may contain confidential information and unauthorized use, disclosure, copying, dissemination or redistribution is strictly prohibited. This is a user presentation of the data. Russell Investment Group is not responsible for the formatting or configuration of this material or for any inaccuracy in presentation thereof.

This document may contain data provided by Morningstar. All rights reserved. Use of this content requires expert knowledge. It is to be used by specialist institutions only. The information contained herein: (1) is proprietary to Morningstar and/or its content providers; (2) may not be copied, adapted or distributed; and (3) is not warranted to be accurate, complete or timely. Neither Morningstar nor its content providers are responsible for any damages or losses arising from any use of this information, except where such damages or losses cannot be limited or excluded by law in your jurisdiction. Past financial performance is not guarantee of future results.

***IMPORTANT DISCLOSURE INFORMATION RE COALITION GREENWICH BEST INVESTMENT CONSULTANT AWARD (formerly known as the Greenwich Quality Leader Award):**

The awards are not indicative of any future performance. The awards or any other rankings and/or recognition by unaffiliated rating services and/or publications should not be construed as a guarantee that a client will experience a certain level of results or satisfaction, nor should it be construed as a current or past endorsement by any of our clients. No fee was paid to participate in this award survey.

The 2024-25 award was issued in February 2025, based on data from February to September of 2024. The 2023 award was issued in April 2024, based on data from Feb to November of 2023. The 2022 award was issued in April 2023, based on data from Feb to November of 2022. The 2021 award was issued in April of 2022, based on data from July to October 2021. Data was collected via interviews conducted by Coalition Greenwich. The 2024 and 2023 awards were issued to Mariner Institutional (formerly AndCo Consulting). The 2021 and 2022 awards were issued to AndCo, prior to becoming Mariner Institutional. The methodology: For the 2024-25 Coalition Greenwich Best Investment Consultant Award for Overall U.S. Investment Consulting – Midsize Consultants – Between February and September 2024, Crisil Coalition Greenwich conducted interviews with 699 individuals from 563 of the largest tax-exempt funds in the United States. For the 2023 Greenwich Best Investment Consultant Award for Overall U.S. Investment Consulting – Midsize Consultants – Between February and November 2023, Coalition Greenwich conducted interviews with 708 individuals from 575 of the largest tax-exempt funds in the United States. For the 2022 Greenwich Best Investment Consultant Award for Overall U.S. Investment Consulting – Midsize Consultants – Between February and November 2022, Coalition Greenwich conducted interviews with 727 individuals from 590 of the largest tax-exempt funds in the United States. For the 2021 Greenwich Best Investment Consultant Award – Overall U.S. Investment Consulting – Midsize Consultants – Between July and October 2021, Coalition Greenwich conducted interviews with 811 individuals from 661 of the largest tax-exempt funds in the United States. These U.S.-based institutional investors are corporate, public, union, and endowment and foundation funds with either pension or investment pool assets greater than \$150 million. Study participants were asked to provide quantitative and qualitative evaluations of their asset management and investment consulting providers, including qualitative assessments of those firms soliciting their business and detailed information on important market trends.

MARINER

Access to a wealth of knowledge and solutions.